



Architecture + Planning  
888.456.5849  
kity.com



**HANOVER 8TH STREET**  
WASHINGTON, DC # 2014-0339

**CONSOLIDATED PUD SUBMISSION**  
FEBRUARY 25, 2018

**RENDERING** ZONING COMMISSION  
NORTH BUILDING District of Columbia  
CASE NO.18-21  
EXHIBIT NO.15A2 **A07**





Architecture + Planning  
888.456.5849  
kity.com



**HANOVER 8TH STREET**  
WASHINGTON, DC # 2014-0339

**CONSOLIDATED PUD SUBMISSION**  
FEBRUARY 25, 2018

**RENDERING**  
PLAZA

**A09**



Architecture + Planning  
888.456.5849  
ktgy.com



**HANOVER 8TH STREET**  
WASHINGTON, DC # 2014-0339

**CONSOLIDATED PUD SUBMISSION**  
FEBRUARY 25, 2018

**RENDERING**  
SOUTH BUILDING

**A10**



Architecture + Planning  
888.456.5849  
kitgy.com



**HANOVER 8TH STREET**  
WASHINGTON, DC # 2014-0339

**CONSOLIDATED PUD SUBMISSION**  
FEBRUARY 25, 2018

**RENDERING**  
SOUTH BUILDING

**A11**



Architecture + Planning  
888.456.5849  
ktgy.com



**HANOVER 8TH STREET**  
WASHINGTON, DC # 2014-0339

**CONSOLIDATED PUD SUBMISSION**  
FEBRUARY 25, 2018

**RENDERING**  
EAST VIEW

**A12**



Architecture + Planning  
888.456.5849  
kty.com



**HANOVER 8TH STREET**  
WASHINGTON, DC # 2014-0339

**CONSOLIDATED PUD SUBMISSION**  
FEBRUARY 25, 2018

**RENDERING**  
EAST VIEW

**A13**



**NOTE**

The interior layouts shown on the building plans are schematic.  
 Changes to the layouts not affecting the exterior envelopes or square footage distribution may occur.  
 Courtyard design and layouts are preliminary and are shown for illustrative purposes only.  
 Final layouts may vary within the general design parameters shown.





**NOTE**

The interior layouts shown on the building plans are schematic. Changes to the layouts not affecting the exterior envelopes or square footage distribution may occur. Courtyard design and layouts are preliminary and are shown for illustrative purposes only. Final layouts may vary within the general design parameters shown.



**NOTE**

The interior layouts shown on the building plans are schematic.  
 Changes to the layouts not affecting the exterior envelopes or square footage distribution may occur.  
 Courtyard design and layouts are preliminary and are shown for illustrative purposes only.  
 Final layouts may vary within the general design parameters shown.



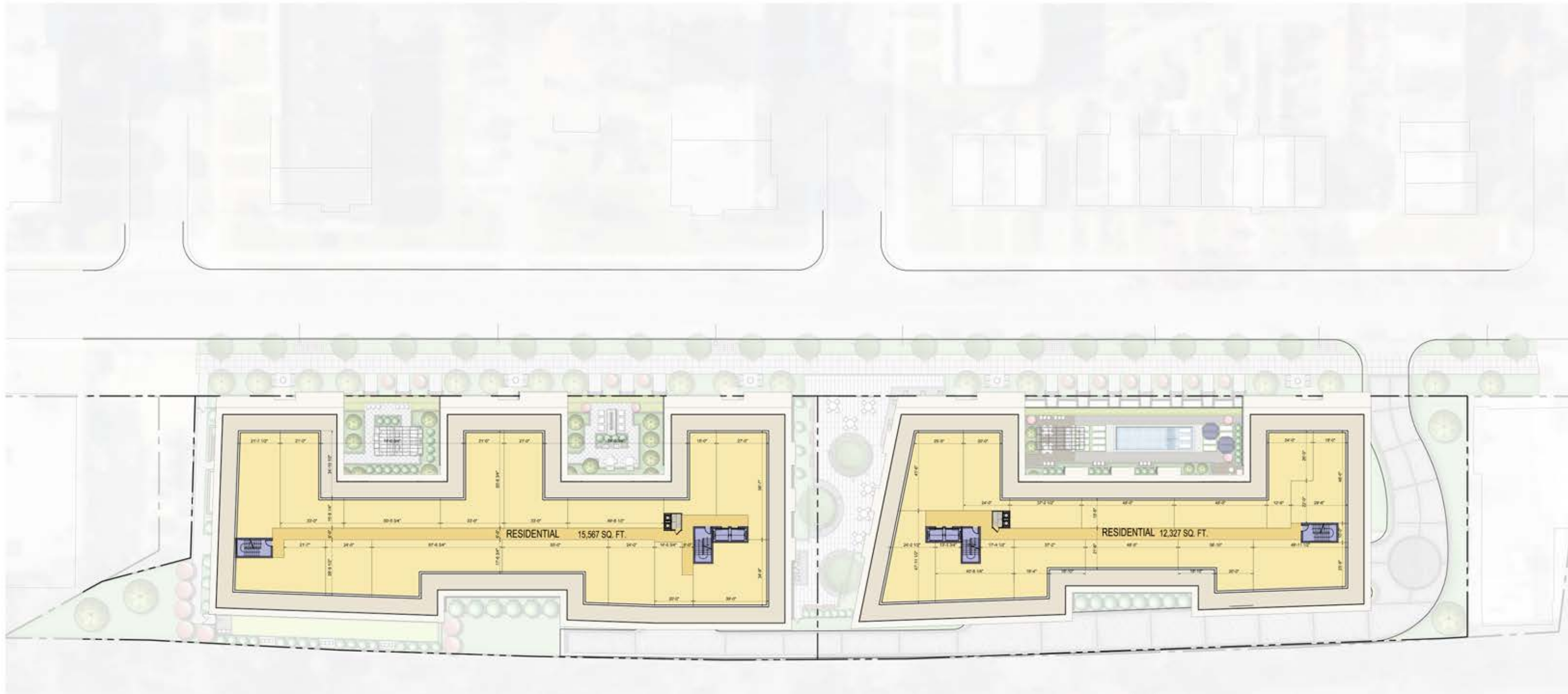
**NOTE**

The interior layouts shown on the building plans are schematic. Changes to the layouts not affecting the exterior envelopes or square footage distribution may occur. Courtyard design and layouts are preliminary and are shown for illustrative purposes only. Final layouts may vary within the general design parameters shown.



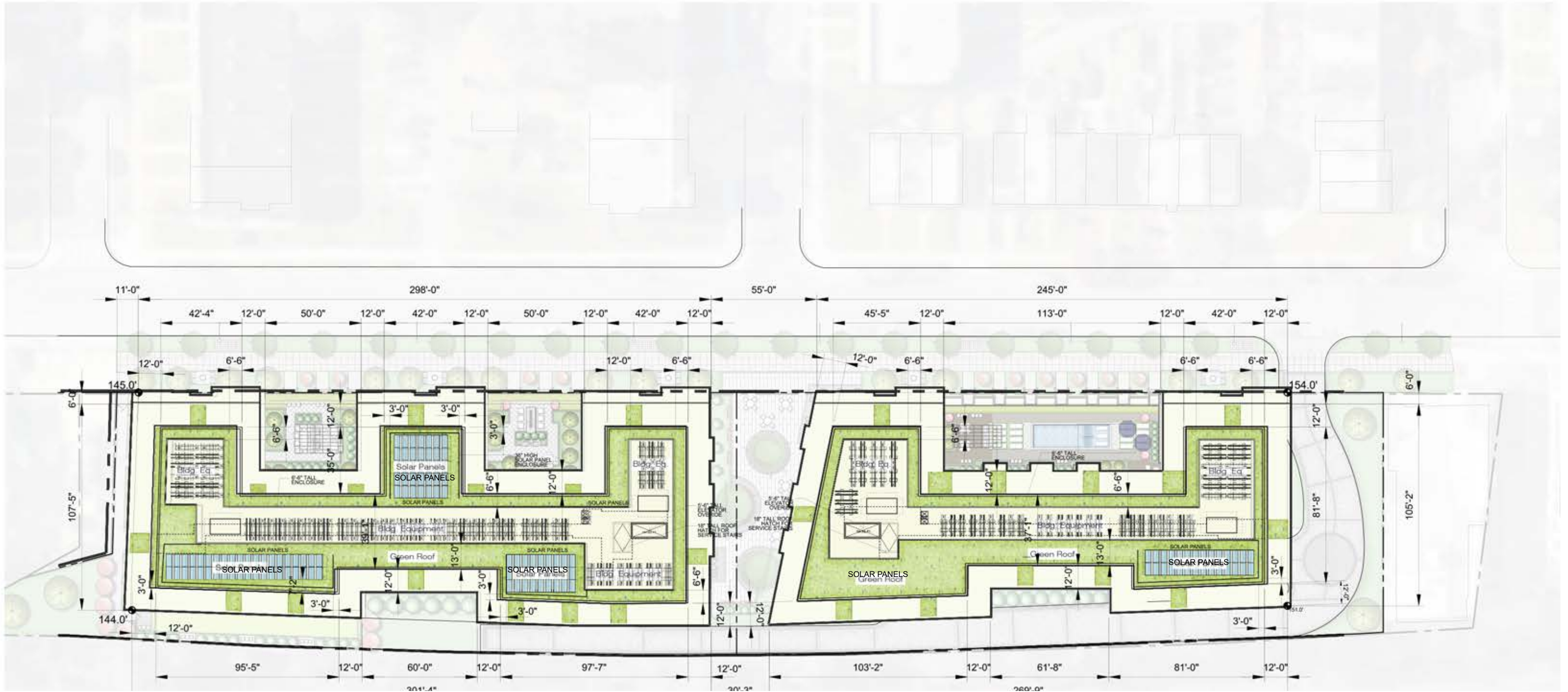
**NOTE**

The interior layouts shown on the building plans are schematic.  
 Changes to the layouts not affecting the exterior envelopes or square footage distribution may occur.  
 Courtyard design and layouts are preliminary and are shown for illustrative purposes only.  
 Final layouts may vary within the general design parameters shown.



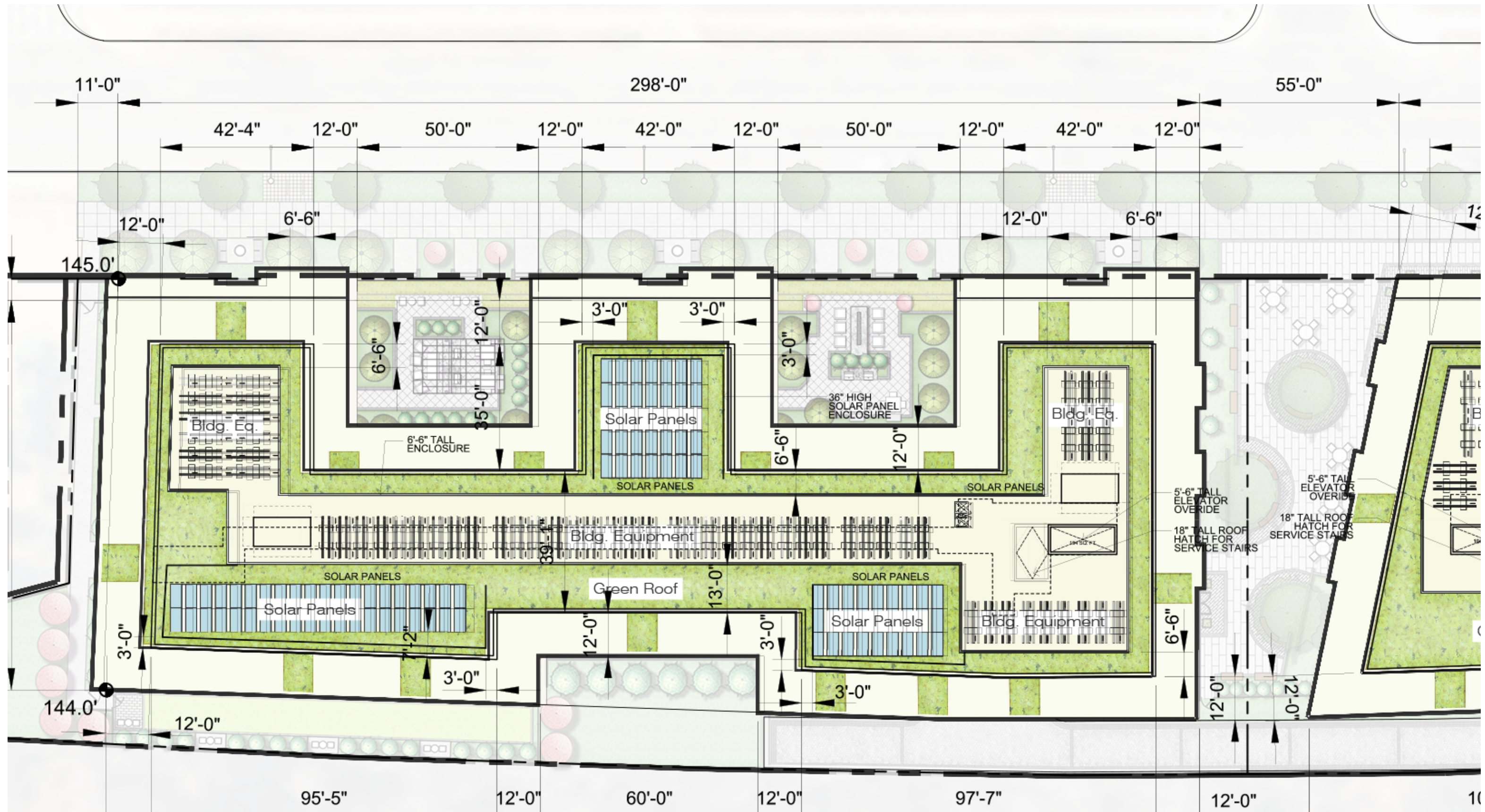
**NOTE**

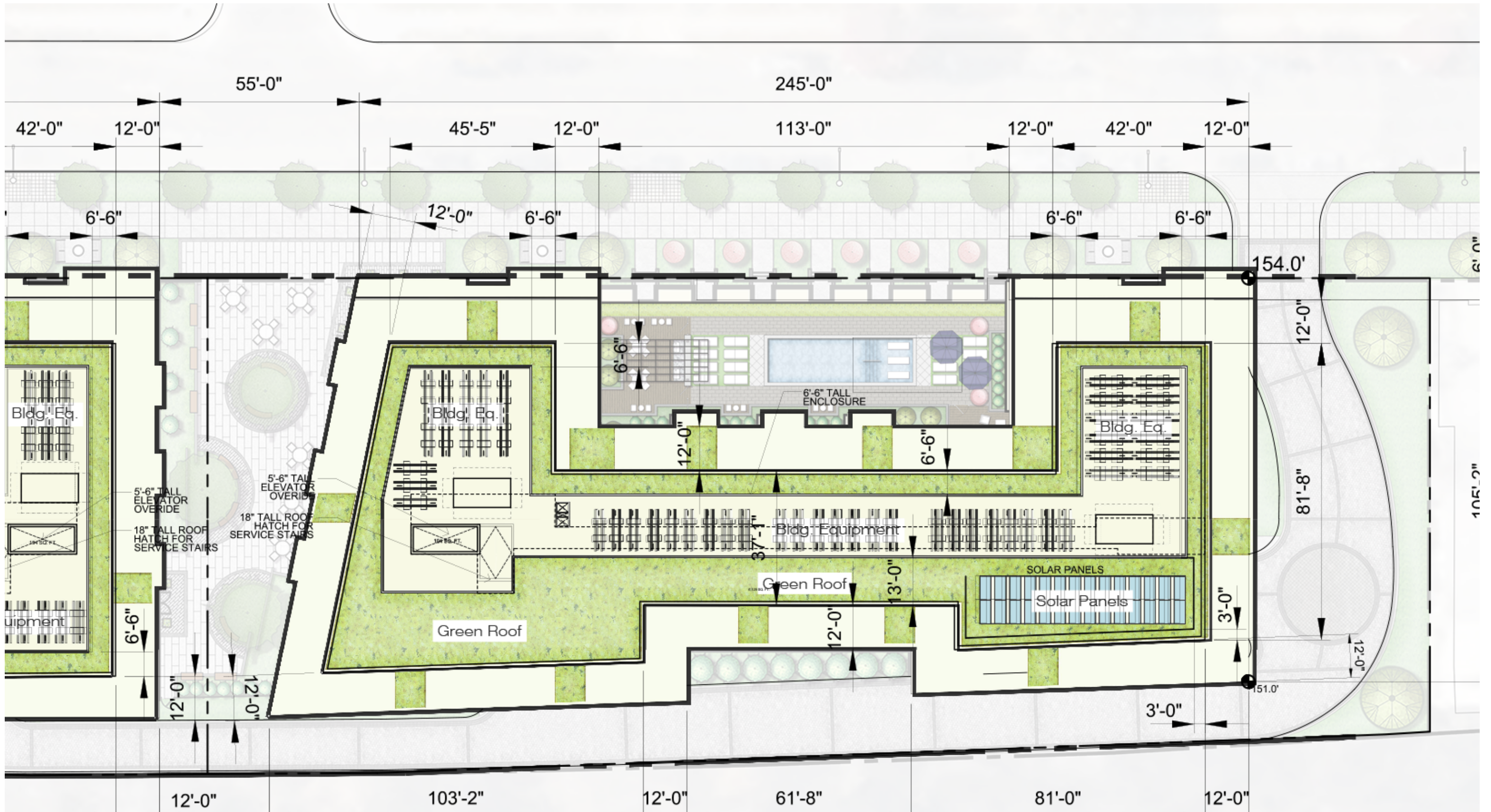
The interior layouts shown on the building plans are schematic. Changes to the layouts not affecting the exterior envelopes or square footage distribution may occur. Courtyard design and layouts are preliminary and are shown for illustrative purposes only. Final layouts may vary within the general design parameters shown.



**NOTE**

The interior layouts shown on the building plans are schematic. Changes to the layouts not affecting the exterior envelopes or square footage distribution may occur. Courtyard design and layouts are preliminary and are shown for illustrative purposes only. Final layouts may vary within the general design parameters shown. Approximately 2750 square feet of solar panels are proposed. The actual location of the solar panels may be revised upon final selection of the solar panel manufacturer and installation guidance.









PARKING	
STANDARD	119
HC	4
COMPACT	61
TOTAL	184 SPACES

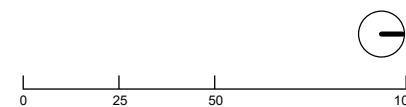


Architecture + Planning  
888.456.5849  
kitgy.com



**HANOVER 8TH STREET**  
WASHINGTON, DC # 2014-0339

**CONSOLIDATED PUD SUBMISSION**  
FEBRUARY 25, 2018



**BUILDING PLANS**  
GARAGE PLAN

**A23**